



www.nccinc.org

IMPACT STATEMENT | 2021



Live. Grow. Work. Thrive.

TABLE OF CONTENTS



02	Message from the CEO
03	Mission & Vision
04	History of NCC
05	2021 Top Highlights
06	2021 Noteworthy Achievements
07	Early Learning & Early Intervention Center
08	Adult Community Support Services
09	Social Determinants of Health
10	Baby Bloomers Urban Farm & Fruit Orchard
11	Spotlight: Bee Harvest
12	Spotlight: Holiday in Candyland
13	NCC: By The Numbers
14	Key Partners & Community Supporters
15	Board of Directors
16	How to Get Involved





MESSAGE FROM THE CEO



NCC's ultimate outcome is to **empower** the members of our community to live, grow, work and thrive. 2021 represented yet another time of challenges and opportunities for NCC. As we collectively navigated the pandemic and changing social and economic dynamics, our team of staff, partners, donors, volunteers and other "Friends of NCC" stepped up in extraordinary ways to assist us in, fulfilling our mission and core values. Our progress toward being one of DC's most consequential nonprofits is a direct result of your commitment, fortitude and passion. As I reflect on 2022 (past, present and future), I believe we've never had more opportunity to drive lasting impact for all persons and communities we support.

By providing an array of services to infants, children and adults in the Washington, DC area, NCC is providing a lifetime of opportunity to those who may otherwise be denied. Last year we embraced change and new ways of working successfully reopening our Adult Day program. We innovated, leveraging virtual reality to enable residents of our Adult Residential program to immerse in new environments and try new skills. We expanded partnerships benefiting our persons supported and young scholars (and their families) financially, socially and holistically. We also proudly advanced our progress on addressing local food insecurity by expanding the products and services of our Urban Garden.

Though recent times have proven to be taxing to the mind and spirit with the loss of social freedoms, economic viability, and in the worst of cases; our precious loved ones, there remains hope. Hope of change, progress and advancement – and hope of a future that embraces people of differing abilities as valued and contributing members of society.

NCC's impact on the community is possible because of you. Thank you for your commitment to NCC and for all you do to live our values and serve our stakeholders every day. Our mission and the work we do make a difference, and I'm grateful to be on this journey with all of you.



About NCC

NCC is an organization that believes in increasing opportunities, building skill sets and improving life outcomes for people in the District of Columbia and Maryland areas. NCC is one of the largest non-governmental providers of services for infants, children, and adults with intellectual and developmental disabilities. We are a leading advocate and community partner, ensuring that people - regardless of physical or mental ability are equipped with the skills they find necessary to **live, grow, work, and thrive**.

For over 60 years, NCC has been relentlessly committed to its core mission of enhancing the lives of people of all ages, diverse backgrounds, and differing abilities through inclusive opportunities. We are flexible because of the personalized approaches we take to help people succeed. Our expansive and dedicated team, secure facilities, and strategic partnerships enable us to offer holistic and customized support to all of the individuals and families we serve. Our approach has also earned us leading industry designations for our programming, including earning the Provider Certification Review (PCR) designation for our Adult services for the last 3 years - and receiving the High Quality designation for our Early Learning Center (ELC).

Our community-based services include the Early Learning & Early Intervention Center, and adult Residential and Day programs. Since our inception, these personalized services have benefited thousands of people, providing educational development and life skill mastery that continuously lead to empowerment, employment, and independent living.

MISSION & VISION

Mission

Enhancing the lives of people of all ages, diverse backgrounds and differing abilities through inclusive opportunities.



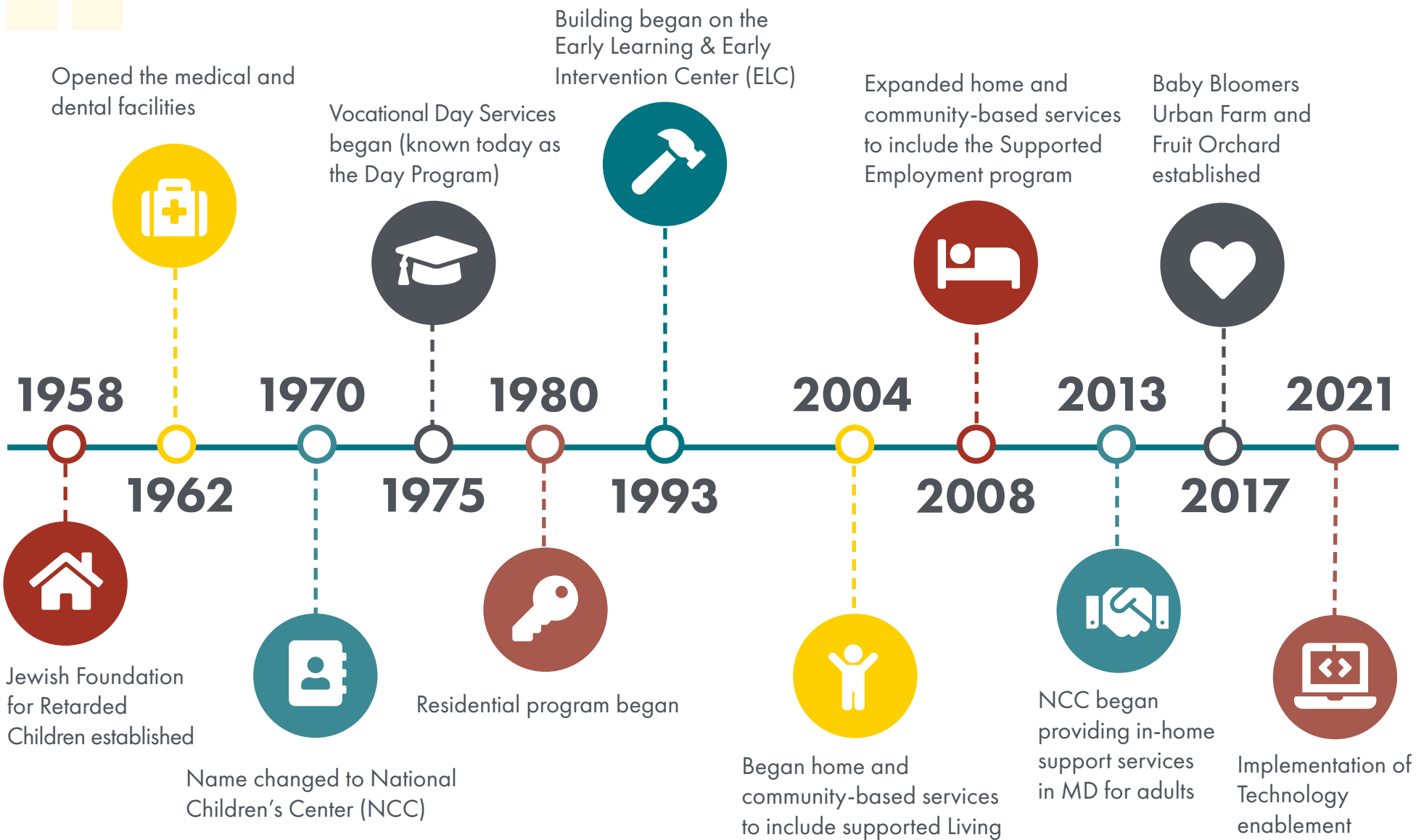
Vision

Our vision for the future is that people with differing abilities will have every resource to learn, grow, work, live and thrive in our community, which fully includes and embraces them as valued and contributing members.

HISTORY OF NCC



Providing service to the community for 64 years



2021

Top Highlights

Community Impact is our Legacy

With a focus on Social Determinants of Health, we strive to meet individual needs so people of all abilities can live, grow, work and thrive.



PROMOTION OF HEALTH & WELLNESS

- Local destination for healthcare needs, including giving Covid-19 vaccinations and boosters, school required screenings and immunizations
- 19,750+ pieces of PPE to staff, families and people supported by our Adult programs
- 2,700+ diapers and wipes distributed to families with small children
- Provided dental wellness checks and continuity of care
- Expanded our Health and Nutrition Initiative to include virtual learning sessions and cooking demos with our resident Chef



ADDRESSED LOCAL FOOD INSECURITY

- 1,850 pounds of chef-prepared meals to students and families
- 150 pounds of fresh and nutritious food and ingredients to ELC students and families grown from our Urban Garden
- Production of the first batch and distribution of 10+ pounds of Baby Buzzers Honey
- Provided affordable access to a variety of locally sourced fruits, vegetables, herbs and value-added products
- Distributed holiday meal essentials, including 100+ turkeys to families of young children in our ELC



INCREASED COMMUNITY ENGAGEMENT

- Hosted a series of drives and giveaways benefiting children in need with coats, hats, gloves and backpacks
- Created “Community Closet” providing clothing to families in need impacted by displacement and other challenging circumstances
- Increased family engagement, offering assistance with housing, job placement, and final arrangements for loved ones
- Hosted seasonal celebrations, during which 120+ ELC scholars received new toys and gift cards for their families in time for the holidays

2021

Noteworthy Achievements

The commitment and dedication of NCC staff, partners and donors enabled tremendous growth and development for our agency. Here's a quick snapshot of last year's major achievements.



FUNDRAISING

Our increased fundraising efforts expanded programming and community outreach efforts, including:

- NCC's 2nd Annual Charity Golf Tournament, increasing contributions 300% YoY.
- Yellow Brick Road campaign, initiating the development of an outdoor S.T.E.A.M learning center.



ACCREDITATION

We sustained our accreditation maintaining best-in-class programs, including:

- High Quality designation by the Office of the State Superintendent of Education for our Early Learning and Early Intervention Center
- Provider Certification Review (PCR) for our Adult Community Support Services



RECOGNITION

NCC awareness was increased thanks to features and press in local media, including:

- Black Press USA
- Caribbean Food Network
- DC Mayor's Office
- NBC Washington
- Smithsonian
- Washingtonian
- Apple TV



EARLY LEARNING AND EARLY INTERVENTION CENTER

Empowering our students, families and communities to live fulfilling lives

The Early Learning & Early Intervention Center (ELC) has served thousands of students since inception, including medically fragile and typically and atypically developing children. We've successfully maintained operations throughout the Covid-19 pandemic – and thankfully benefitted from fruitful partnerships that enabled us to expand programming. We delivered best-in-class education and developmental support, provided food and resources to those in need, and hosted memorable experiences. **Communities thrive when everyone's individual needs are met.** Our holistic approach is empowering our students, families and community to live, grow and thrive even in the most challenging of times.



Students *Our Future*

- We gave a robust education to 210 enrolled children of all abilities, including providing developmental support for our medically fragile and those with special needs.
- We introduced the children to new experiences, new concepts like STEAM (via our outdoor classroom), and challenged them physically with the introduction of tennis.



Families *Their Guides*

- We established a substantial priority on health and wellness, becoming a local destination for preventative care (i.e. onsite dental care, wellness checkups, health screenings, Covid testing and vaccine administration, etc.), food source for families in need, and a promoter of healthy eating and lifestyles through sessions and cooking demos.
- We also assisted children of families who needed necessities by supplying diapers and wipes, backpacks and seasonal essentials like hats, coats and



Community *The Village*

- Our diverse programming included:
- Clothing drives and giveaways
 - Seasonal celebrations
 - Events focused on nature



NCC ADULT PROGRAMMING COMMUNITY SUPPORT SERVICES



Adult Day Program – Program Reopening

NCC delivers customized Community-Day and Residential support services. Over the past year, our NCC team worked hard to maintain a balance between safety, support and wellness. We are so proud of the persons supported and staff of our Day Program for their flexibility, resilience, and bravery during these unprecedented times.

The program closure had a great impact on our persons supported. They were accustomed to engaging with each other and staff, as well as participating in community activities. During the pandemic, persons supported were restricted to in-home based activities and limited community interaction.

We officially resumed in-person activities on April 6, 2021 - a time many other programs remained closed. Knowing that nothing can truly replace the experience of face-to-face interaction, we worked hard to develop our reopening plan and safety protocols that took into consideration CDC guidelines,

DDS requirements as well as feedback from NCC staff, students and families. Everyone is healthy and happy to be back among their NCC friends and family – and thrilled to have some normalcy after months of physical distance.



Introduction of Technology Enablement

We are continuing to grow our knowledge and skillsets with a specific focus on technology. Our recent technology endeavors include the exploration of virtual reality (VR) as a way to increase engagement and enjoyment for persons supported in gaining life skills and experiences. There are endless possibilities for technology use in daily life with ever-evolving features to leverage. Through virtual reality technologies, persons supported can be in complete control of their surroundings in immersive environments safely learning and practicing new skills, or participating in activities where barriers in real life can be overridden within the power of a virtual space. Oculus Quest and Floreo (VR), along with technologies such as virtual assistants and other smart home devices, are promising tools for radical change.



ADDRESSING SOCIAL DETERMINANTS OF HEALTH TO ENSURE EQUITY AND ACCESS



IMAGE CREDIT: U.S. Department of Health and Human Services

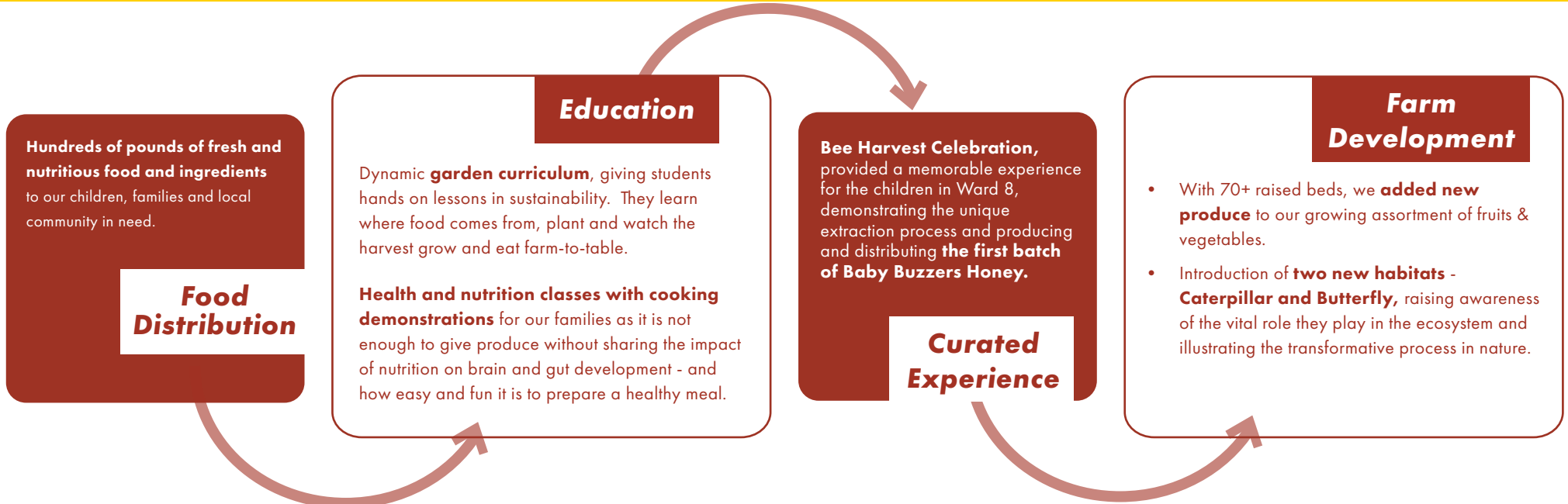
At NCC, we believe that health is a state of complete physical, mental, and social wellbeing. It is influenced by factors, called social determinants of health, which extend far beyond the healthcare system and include things like economic stability, housing, transportation, safety, literacy and language, support systems, accessibility, and discrimination. As an organization that is deeply ingrained in the communities we support, we see the crushing realities that a lack of access and unmet needs can create. We believe it is our responsibility to create conditions and remove barriers which hinder our neighbors' and friends' abilities to not only thrive, but excel.

Our services continue to support the wellness of our community through person-centered approaches to living a successful life. We are committed to shrinking disparities that exist between people of different neighborhoods, identities, and abilities by understanding individual needs, providing, and connecting people to opportunities and resources within their environments, and reducing impediments to quality healthcare and education.

BABY BLOOMERS URBAN FARM & FRUIT ORCHARD

Feeding and fostering our local community

The health and economic crisis spurred by the pandemic has caused greater hardship for families in our region. Per a recent Hunger Report, "1 out of 10 residents in the Metropolitan Washington region is food insecure.... nearly 1/3 of them are children." **Baby Bloomers Urban Farm & Fruit Orchard** was built in 2017 as a community farm to address issues of food insecurity affecting persons supported and families in surrounding neighborhoods. We strengthened our impact in 2021, focusing on the following:



SPOTLIGHT: BEE HARVEST @ BABY BLOOMER'S URBAN FARM & FRUIT ORCHARD

- On June 23, 2021, NCC staff and children gathered to see the first production of Baby Buzzers Honey.
- The children were able to see the honeycombs be pulled from the hive and the honey extracted, accompanied by our certified bee-keeper staff.
- Over 10 pounds of honey was harvested – and everyone got a taste!
- This event was profound because of it's multifaceted focus on **Sustainability**.

HEALTH: It taught and promoted the health benefits of honey.

ENVIRONMENT: It raised awareness of the environmental impact of these wonderful pollinators.

LIFE: It gave the children a front row seat on the honey production process, not only peaking their curiosity, but also demonstrating the possibility of creating it (not in factories and stores) but in their own backyard.

“ *The flavor of the honey is incredible!
Never tasted anything like it!* ”

- Patricia Browne, NCC CEO



SPOTLIGHT: HOLIDAY IN CANDYLAND

- On December 16, 2021, NCC hosted Holiday in Candyland at our Early Learning and Early Intervention Center (ELC), in partnership with Atmos Solutions.
- Our students wore the coats that we collected at our Winter Clothing Drive and got to enjoy a live nativity, inclusive of sheep and Delilah the Camel.
- The event also featured a parade down Martin Luther King Jr. Avenue starring Santa and Mrs. Claus – and the Ballou High School Drumline ! Families joyfully came out of the homes to watch, dance and join the procession.
- Santa even distributed gifts to all of our ELC students as they enjoyed their holiday treats and the other event festivities.
- This event took place in the Ward 8 community, unifying local residents, media, schools, businesses and law enforcement. With the support of our partners, active community engagement like this enables NCC to be the connective tissue that unites and celebrates all in our local community.



2021 BY THE NUMBERS

1,850

pounds of chef-prepared meals to students and families

19,754

pieces of PPE distributed to staff, families, and the adults we support across our residential homes

1,418

hours of clinical services

2,736

packages of diapers and wipes distributed to vulnerable families with small children

150

pounds of food distributed

670

community hours of persons supported in the Day Service program

126+

hours of professional development

13,416

community hours of persons supported in the Residential program



KEY PARTNERS & COMMUNITY SUPPORTERS

Partnerships are vital to NCC. Strengthening existing partnerships and identifying new opportunities to collaborate, sustains our work by leveraging our resources and embeds us further into the community's fabric, ensuring that children and families in our community have the necessary resources to thrive. Partners assist in numerous ways. Their support includes providing therapy services for children, offering staff professional development for teachers, enabling community-based senior citizens to serve as volunteers in the infant and toddler classrooms, and donating garden beds with fresh produce for children and the community. Join the growing number of NCC partners and supporters.

COMMUNITY PARTNERS

- 11th Street Bridge Park
- Department of Behavioral Health
- City Blossoms
- Early Stages
- Health Services for Children with Special Needs
- National Association for the Education of Young Children (NAEYC)
- National Black Child Development Institute (NBCDI)
- Strong Start
- The DC Child and Family Services Agency
- Atmos Solutions, Inc.
- Sesame Street in Communities
- American Network of Community Options and Resources (ANCOR).

KEY PARTNERS



WOLF TRAP

INSTITUTE FOR
EARLY LEARNING
THROUGH THE ARTS



Healthy Futures

cultivating leaders through relationship education

UNIVERSITY PARTNERS

Georgetown University

Howard University

George Washington University

Trinity University

The University of the District of Columbia

BOARD OF DIRECTORS

Thandi-Baxter Magro

Sodexo

Marisa C. Bown MSN, RN

 Governance Committee Chair

Georgetown University (Retired)

Robert Kennedy

RCM of Washington

Florie S. Perellis

 Chair of the Board

Allstate Insurance Company
(Retired)


Jeffrey S. Benson

 Vice Chair;
Finance Committee Chair
CASE Credit Union

Keela S. Carpenter

DC Courts

Joel Limerick

 Treasurer
Document Systems, Inc.

Ronald J. Steptoe, CMR, DABD

Warrior Centric Health, LLC

Theresa N. Taylor

PayPal, Inc.

Kisha A Brown, Esq.

 Secretary; Development
Committee Chair
Justis Connection

Marica Cox Mitchell

Bainum Family Foundation

Terrel Limerick

Special Olympics
International

LaTonyia D. Wade

CDW

 denotes Executive Board Member

GET INVOLVED

PARTNER | DONATE | VOLUNTEER

Your generosity fuels NCC's programs, services and community outreach. Join us and help strengthen the vitality of the communities we serve!

More ways to show your support



Get on the Yellow Brick Road

Join us in creating a wonderland of educational fun and learning, and make it as magical as it is meaningful for the children whose lives it will enrich. Learn more by visiting:

www.nccinc.org/yellow-brick-road



Double your Donation

At NCC, we're dedicated to providing a lifetime of opportunity for people of varying abilities. An easy way to double your contribution is through employee giving programs. Many corporations match employee donations (or the tax-deductible component of your membership) to our organization.

If you volunteer with us, your employer may also provide us with a grant as a way to recognize your ongoing support. Click here to see if your employee offers a match!

www.doublethedonation.com/ncc



Give from your Donor Advised Fund (DAF)

A donor advised fund (DAF) is a charitable giving program that allows you to combine the most favorable tax benefits with the flexibility to support your favorite causes. If you have a donor advised fund, DAF Direct enables you to recommend grants to NCC directly from your DAF. Learn more by visiting:

www.nccinc.org/donate#workplacegiving

CONTACT US



NCC Main Office



8757 Georgia Avenue, Suite 700
Silver Spring, MD 20910



Tel: (202) 722-2300



Email: info@nccinc.org



Adult Community Support Services



410A University Blvd., West
Silver Spring, MD 20901



Tel: (202) 722-2364



Email: CommunityServices@nccinc.org



Early Learning and Early Intervention Center



3400 Martin Luther King, Jr. Avenue, SE
Washington, DC 20032



Tel: (202) 279-4900
Fax: (202) 279-4961



Email: enrollment2@nccinc.org